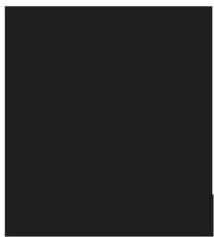


**I BELIEVE  
I CAN FLY**



**ISO 9001:2008**

[www.ozoneelevators.co.in](http://www.ozoneelevators.co.in)

# I BELIEVE I CAN FLY

QUALITY



SAFETY



ENVIRONMENT



Innovative  
Efficient  
Safe  
Technology



ISO 9001:2008

[www.ozoneelevators.co.in](http://www.ozoneelevators.co.in)



## Company Profile



**ISO 9001:2008**

**I BELIEVE  
I CAN FLY** 

Owing to our reputation in the industry for manufacture of dimensionally precise and architecturally designed elevators. We offer products of global standard. The highly customized range offered by us which is manufactured using best grade raw material and putting into use latest technology has become a benchmark in the industry for durability, efficiency, safe use and afford ability. The gamut of products offered by us comprises of industrial elevators, passenger lifts, commercial elevators, goods elevators, elevators maintenance and repair and multi level car parking.

We take pleasure to introduce ourselves as a group providing service to the owners / users of Elevator / Hoist installed in different residential, commercial complex, industries etc. We have a group of rich experience of technical expertise to provide maintenance services, constancy facilities.

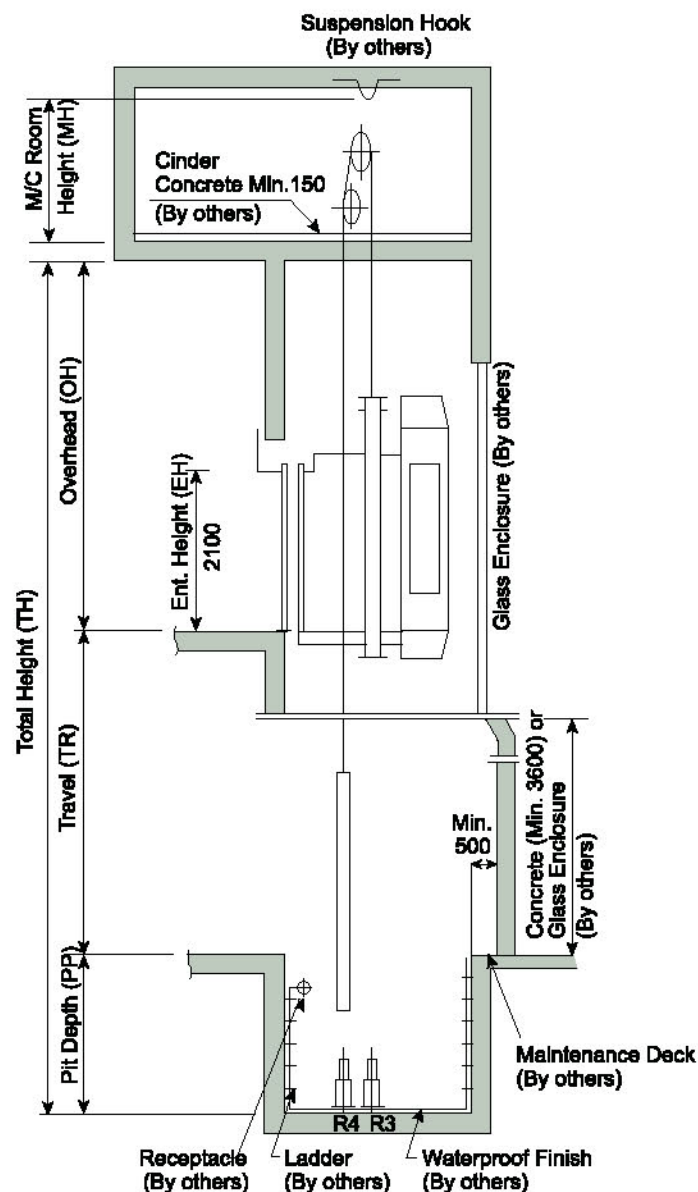
We have 20 years of experience in this field.

### **WHY OZONE ELEVATORS CO.....**

1. Prompt service to the clients.
2. Insure all safety precaution for erection and maintenance.
3. Our availability rounds the clock and to ensure maximum preventive erection and maintenance service to customer satisfaction.
4. Minimum down time.
5. Most economical.
6. Better maintenance during and after the warranty period so that a product of nature of elevator is updated of its maintenance and usage

**We are assuring you of our best service at all times.**

## (Three side Glass)

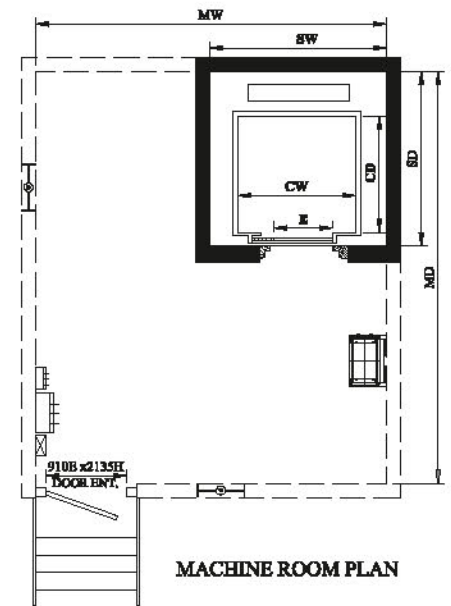
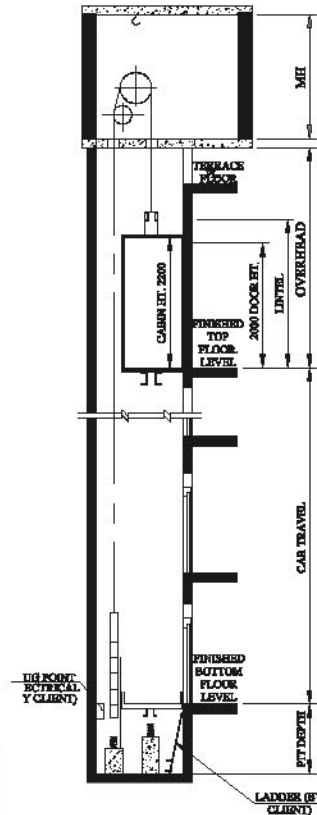
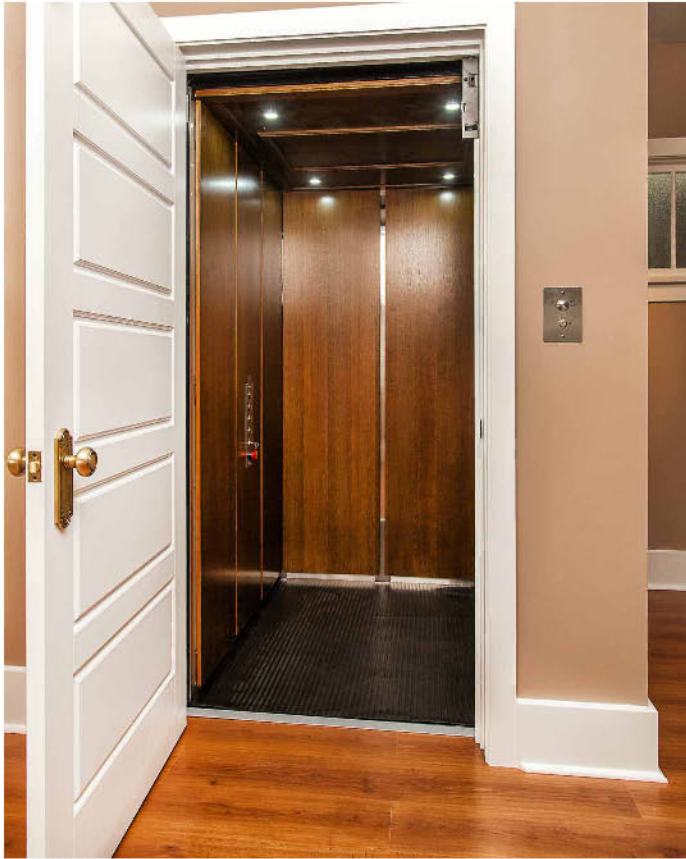


## STANDARD DIMENSIONS & REACTIONS (THREE SIDE GLASS)

(Unit : mm)

Speed (m/min)	Capacity		Clear Opening	Car		Hoistway				M/C Room			M/C Room Reaction (kg)			Pit Reaction (kg)	
				Internal	External	1Car	2Cars	Depth		1Car	2Cars	Depth	R1	R2 (1Car)	R2 (2Cars)	R3	R4
	Persons	kg	OP	CA x CB	A x B	X1	X2	Y	S	MX1	MX2	MY					
60 90 105	11	750	800	1400x1400	1480x1610	2450	5100	200	1200	2900	510	3500	6150	3450	6900	8700	7150
	13	900	900	1600x1450	1660x1660	2650	5500	2050	1350	3300	5500	3550	6900	3750	7500	9700	7900
	15	1000	900	1600x1570	1660x1780	2650	5500	2200	1350	3300	5500	3700	7200	3950	7900	10300	8300
	17	1150	1000	1800x1580	1900x1790	2850	6100	2200	1600	3500	6100	3700	9100	5450	10900	13150	10900
	20	1350	1000	1800x1800	1900x2010	2850	6100	2400	1600	3500	6100	3900	9150	6750	13500	14550	11850
	24	1600	1100	1800x2000	1900x2210	2850	6100	2600	1600	3500	6100	4100	10000	7150	14300	16100	12900

## Manual Doors



### MANUAL DOOR OPERATION PASSENGER ELEVATORS

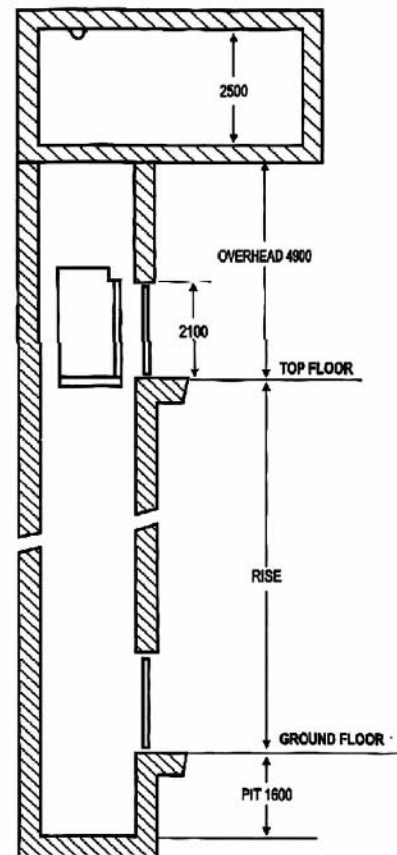
LOAD		CARINSIDE		LIFT SHAFT		ENT.	MACHINE ROOM			PIT DEPTH	OVERHEAD
Kg	PASS	CW	CD	SW	SD	E	MW	MD	MH		
272	4	1100	725	1600	1100			3250			
340	5	1000	900	1550	1325			3550			
		1100	875	1625	1250	700	2850	3250			
408	6	1150	925	1625	1375			3450	2650	1500	4200
		1200	950	1700	1375		2900	3450			
544	8	1300	1100	1800	1500	800	2950	3550			

All Dimensions are in mm size.  
This is General Data it may be changed without notice for more details contact us.  
All hoist way walls should be minimum 230 mm brick or 150 mm R.C.C.

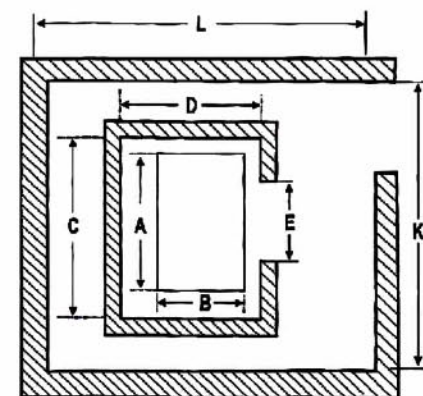
## Auto Door



HOISTWAY ELEVATION DRAWING



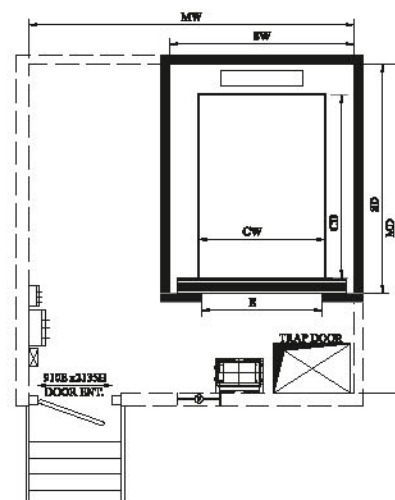
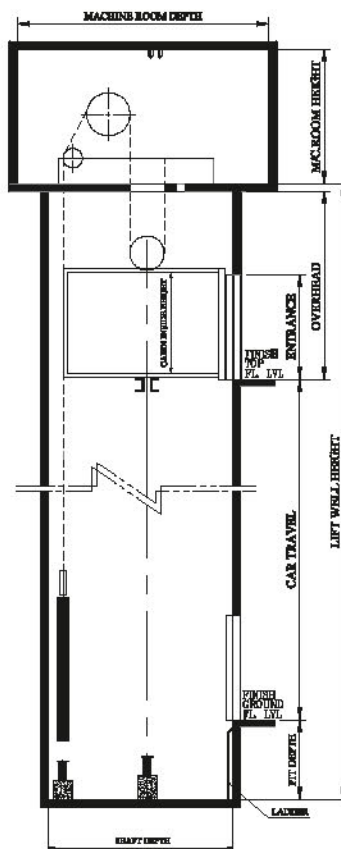
HOISTWAY PLANE LAYOUT



### AUTOMATIC VARIABLE SPEED COLLECTIVE OPERATION PASSENGER ELEVATORS

LOAD		PLATFORM EDGES		LIFT-WELL IN SIDE FINISHED		ENTRANCE WIDTH	DOOR TYPE	MACHINE ROOM		SPEED MPS	PIT DEPTH	OVER HEAD
PER SONS	KG	A	B	C	D	E	ALL CENTER OPENING	K	L	UPTO 1.5	1600	4900
6	408	1200	1300	1700	1800	700		$300+C+300$	$600+D+1500$			
8	544	1500	1330	2000	1800	800		$300+C+300$	$600+D+1500$			
10	680	1650	1450	2150	2000	800		$600+C+600$	$600+D+1500$			
13	884	1900	1500	2400	2000	900		$600+C+600$	$600+D+1500$			

All Dimensions are in mm size.  
This is General Data it may be changed without notice for more details contact us.  
All hoist way walls should be minimum 230 mm brick or 150 mm R.C.C.



## SPACE REQUIREMENTS FOR MANUAL DOOR & AUTO DOOR OPERATION STRETCHER ELEVATORS

LOAD		PLATFORM EDGES		LIFT-WELL IN SIDE FINISHED		ENTRANCE WIDTH	DOOR TYPE	MACHINE ROOM		SPEED MPS	PIT DEPTH	OVER HEAD
PER SONS	KG	A	B	C	D	E		K	L			
8	544									0.3 TO 0.5	1600	5100
TO	TO	1200	2300	1900	2400	1600	COLLAPSIBLE	600+C+600	600+D+1800			
12	816						AUTO DOOR					

All Dimensions are in mm size.  
This is General Data it may be changed without notice for more details contact us.  
All hoist way walls should be minimum 230 mm brick or 150 mm R.C.C.

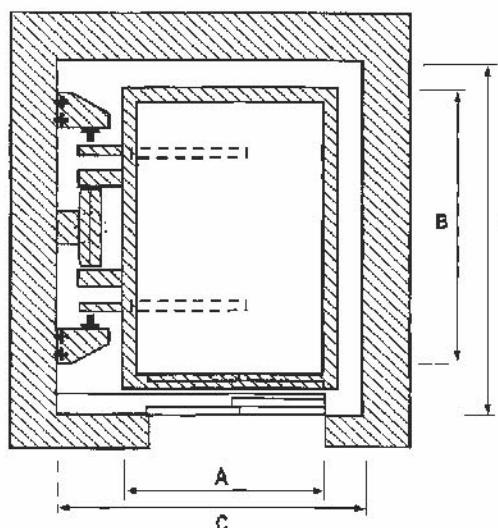


One impact, the downward motion of the plunger assembly displaces oil through the metering tube holes. There by decelerating the impacting mass. The buffers's performance characteristics are dependent upon the size distribution of these holes.

The re-extension of the plunger after impact is effected by a unique gas spring. The gas spring contains nitrogen at a pressure of 20 to 30bar. The area differential between the top and bottom of the piston results in a net force which re-extends the plunger after the compressive load is removed; (the gas is not compressed).

Thus the buffer performance on impact relies solely on oil displacement; the gas spring serves only to re-extend the plunger. Moreover, frictional forces of the plunger remains re-extended.

HOISTWAY ELEVATION & PLANS



## BENEFITS

- ✦ Minimize Inventory
- ✦ Low unit cost
- ✦ Long term support

## FUTURES

- ✦ Wide mass range
- ✦ Simple, robust design without mechanical springs.
- ✦ Light weight.
- ✦ Minimum overall height.
- ✦ Technical support and buffer design consultancy.
- ✦ Controlled peak deceleration.

## HOIST WAY MACHINE ROOM SIZES

PERSONS	CAPACITY KG	CAR-W (A)	CAR-D (B)	SHIFT-W (C)	SHIFT-D (D)
3	225	800	900	1300	1300
4	300	850	1050	1350	1450
5	375	1000	1100	1500	1500
6	450	1100	1150	1600	1550
8	600	1100	1400	1600	1800
10	750	1200	1550	1700	1950
12	900	1300	1650	1800	2050
15	1125	1300	2000	1800	2400
20	1600	1400	2400	1900	2800

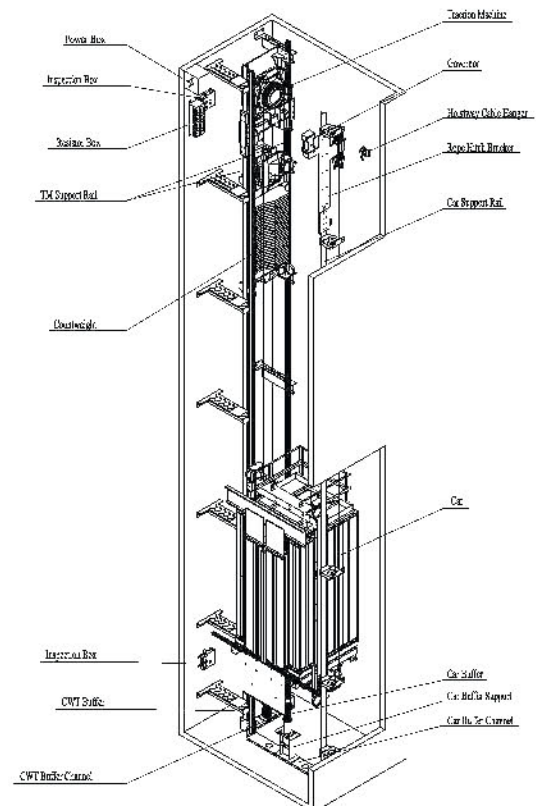
## Machine Roomless



Ozone Elevators co. Roomless passenger Elevator, incorporates environment concern, saves energy consumption, also saves the construction area and gives a free-hand to designers, fully reflects the idea of environment friendly culture.

Compared with gear wheel elevators with the same load capacity, these elevators save 25% electricity and 10% of construction area. Ozone Elevators co. Roomless Passenger Elevator have broken through the prerequisite for machine room, providing limitless possibilities of creation for the space of modern construction .

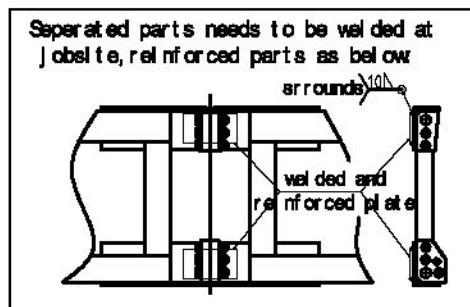
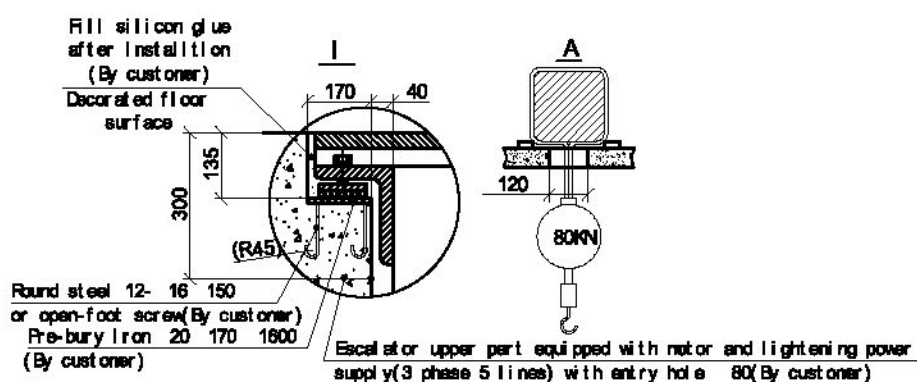
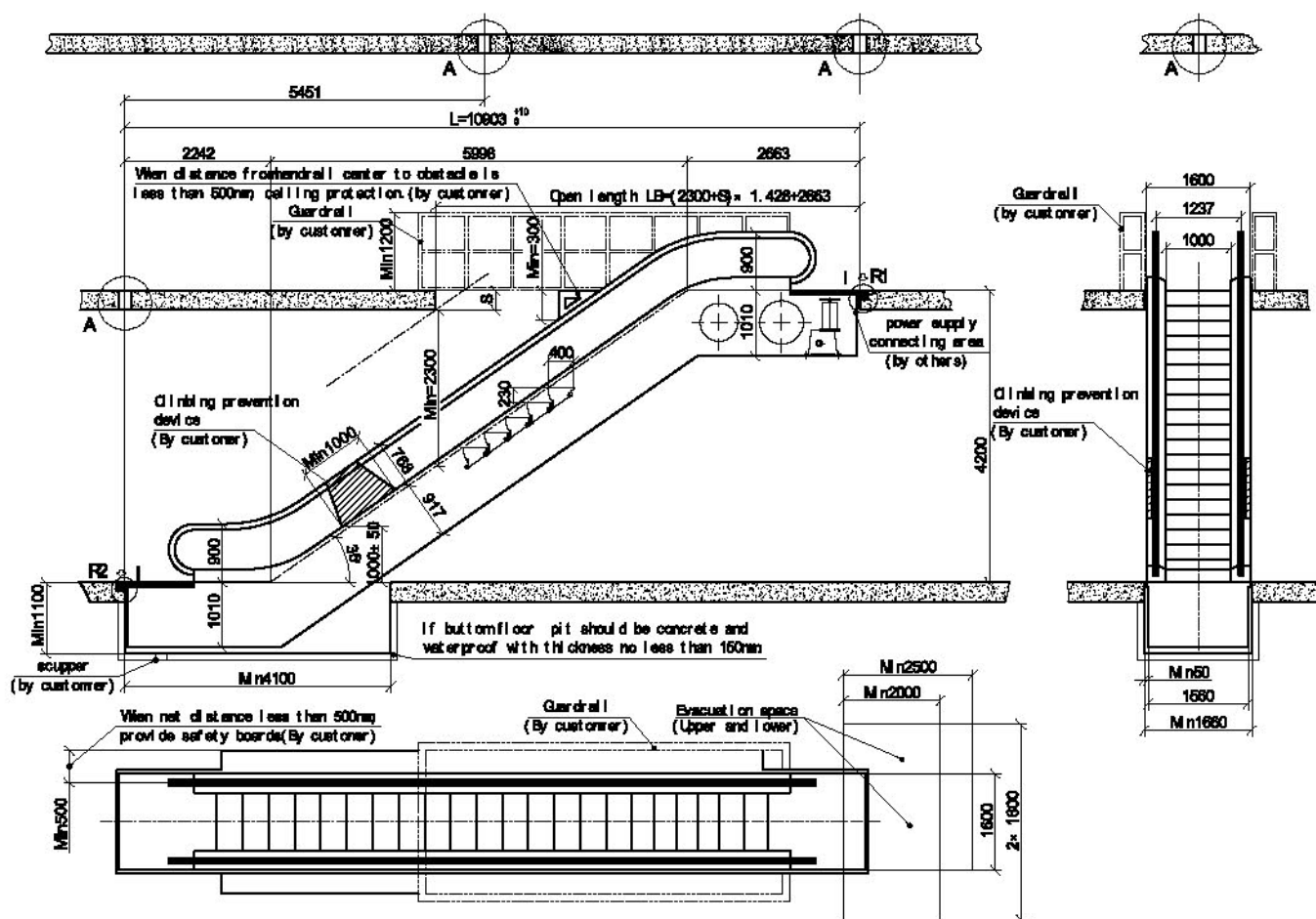
- Ozone Elevators co. Roomless passenger Elevator take less space, which enables you to effectively utilize the construction space.
- They save the construction time, materials and costs.
- The combined desin of machine room together with the hoist-way and highly effective installation ensure affect freeness to the engineering caused by the installation of elevators.



### DIMENSIONAL DETAILS MACHINE ROOMLESS ELEVATOR

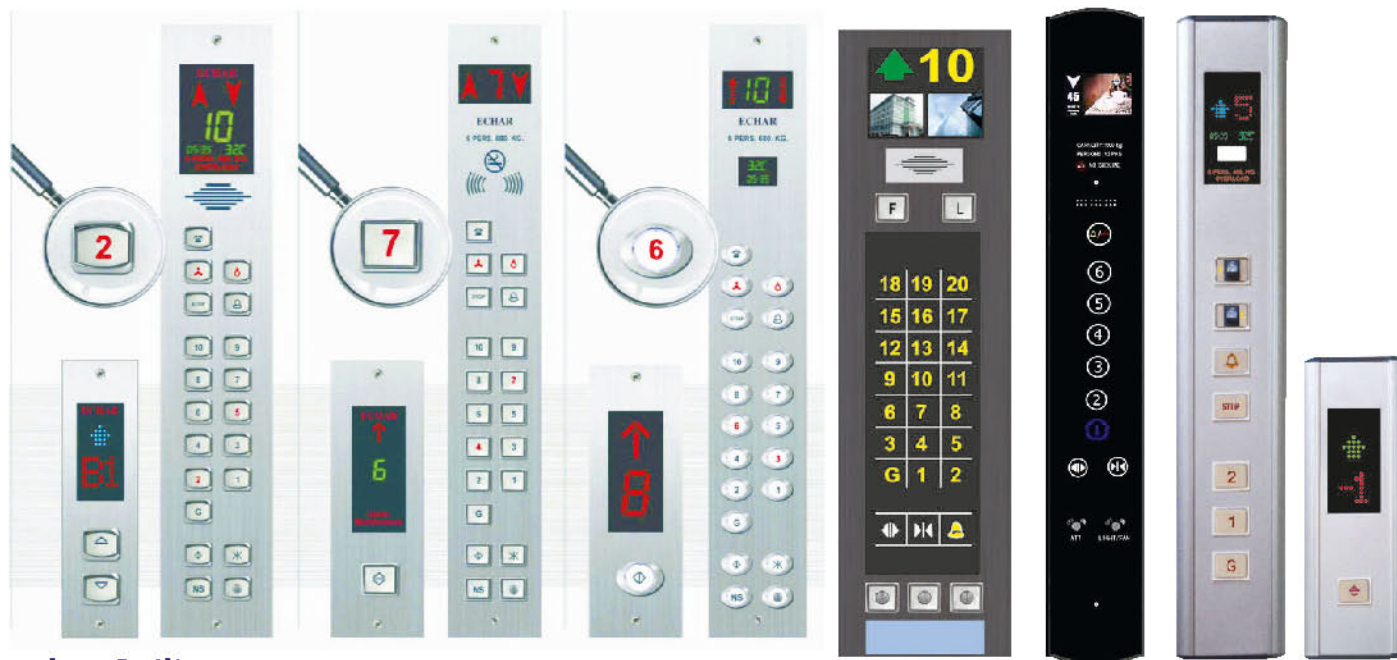
LOAD		PLATFORM EDGES		LIFT-WELL IN SIDE FINISHED		CAPACITY KG	ENTRANCE WIDTH & HIGHT	
PERSON	KGN	A	B	C	D	E	F AUTO DOOR	F MANUAL TELESCOPIC
6	408	1200	900	1800	1400	700	780/2100	1450/2350
8	544	1300	1100	1900	1600	800	880/2100	1600/2350
10	608	1300	1300	1900	1800	800	880/2100	1600/2350
13	884	1600	1400	2200	1900	900	980/2100	1700/2350

All Dimensions are in mm size.



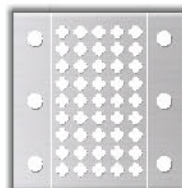
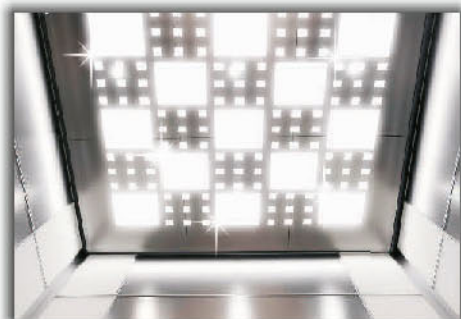
**Note:** The drawing is not drawn to scale.

## Signalization

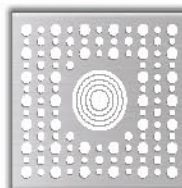


## False Ceiling

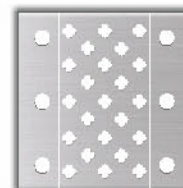
### Touch Screen Panel



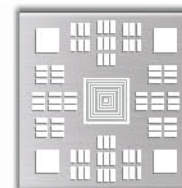
HCS-CE01



HCS-CE02



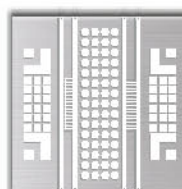
HCS-CE03



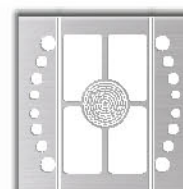
HCS-CE04



HCS-CE05



HCS-CE06



HCS-CE07



HCS-CE08

## Designer Sheets



HCS-DS001



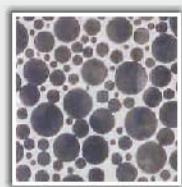
HCS-DS005



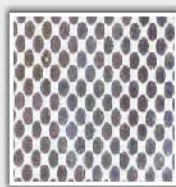
HCS-DS008



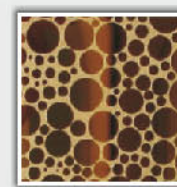
HCS-DS015



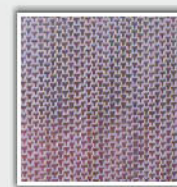
HCS-DS016



HCS-DS017



HCS-DSG016



HCS-DS-HK

## PRODUCTS

- ONLINE UPS - 1KVA -500KVA
- OFFLINE UPS - 1KVA-150KVA
- HOME INVERTERS



## EMERGING FEATURES OF OUR SYSTEM.

Built-in AERD. Hence, trapping inside the lift is nullified in case of battery low trip.  
Also avoids unnecessary panic.

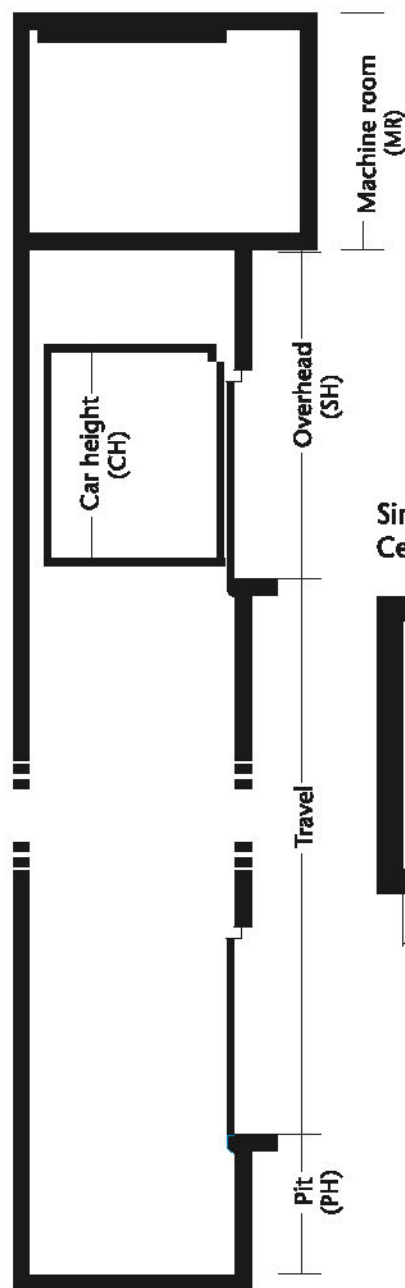
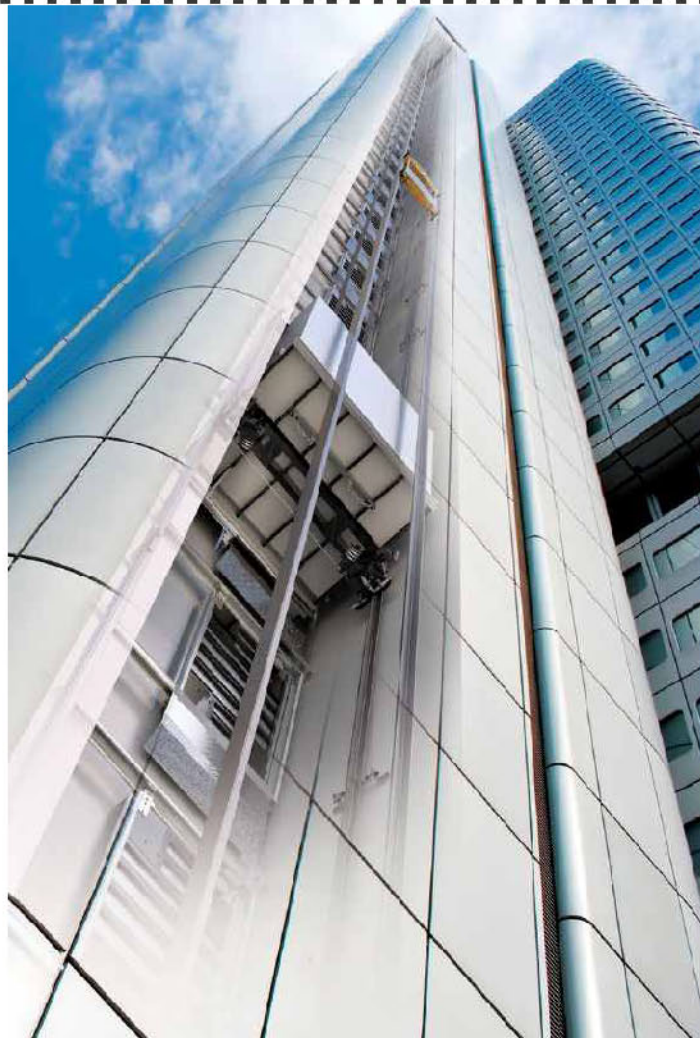
IGBT Technology improves the up time guarantee up to 99% by reducing breakdown.

3 phase charger avoids the heavy loading on single phase and distribute the charging current on three phases equally.

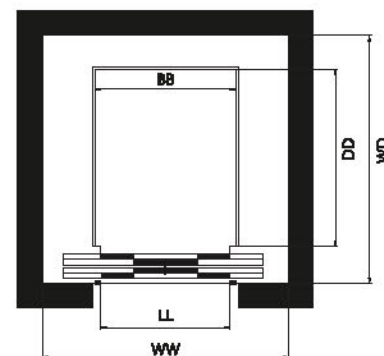
Unity Power Factor (Optional Reduce the electricity bill).

Auto phase reversal correction. (Optional)

LCD Display indicating status of machine, it's I/P & O/P Power supply and causes of breakdown.

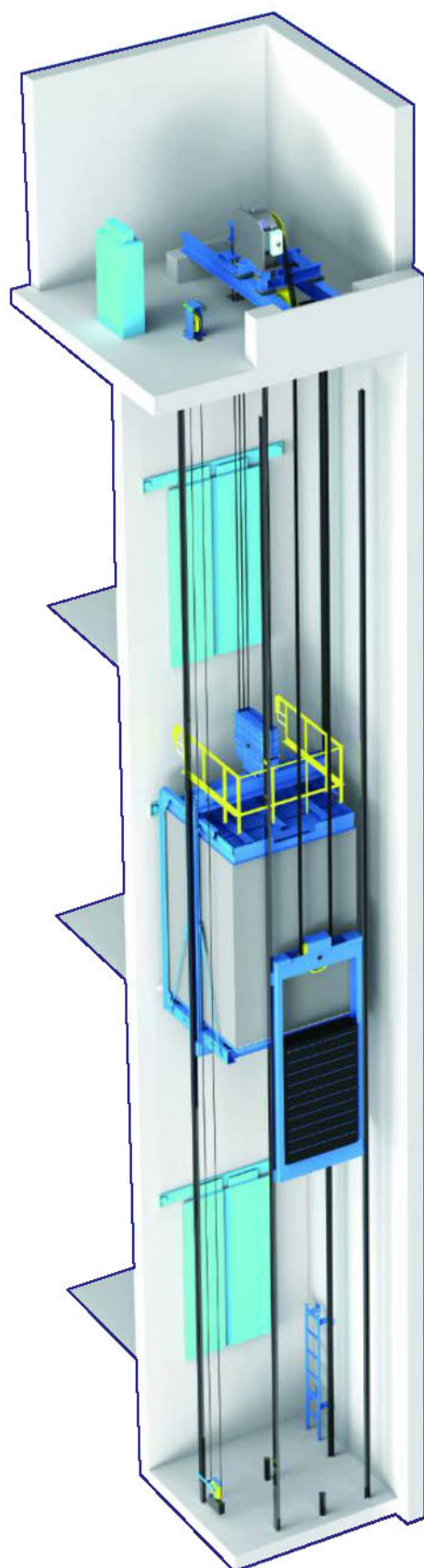


Single entrance car  
Center opening



Speed	2.5 Load ≤1020 kg	2.5 Load >1020Kg	3	3.5		4	
	Side / Rear	Side/Rear	Side/Rear	Rear	Side	Rear	Side
Std car Inside Height (CH) mm	2400	2400	2400	2400	2400	2400	2400
Std Door Height (H) mm	2200	2200	2200	2200	2200	2200	2200
Max Travel (m)	120	120	150	180	180	210	210
Std Pit height (mm)	2000	2100	2700	3800	4300	4100	4800
Std Head room height (mm)	5500	5600	5800	6100	5700	6800	6200

WW - Well Width; WD- Well Depth; BB - Car Width; DD - Car Depth; LL - Door Opening



## S700P

### Passenger Elevator with small machine-room

#### Traction machine

1. High-efficiency and energy-saving
2. green and environment-friendly
3. space saving
4. low-noise.

#### Controller Cabin

1. good compatibility, integrate logic with drive
2. Quick response, high reliability
3. Galvanized surface, corrosion-resistance in elegant appearance

#### User-friendly cabin design

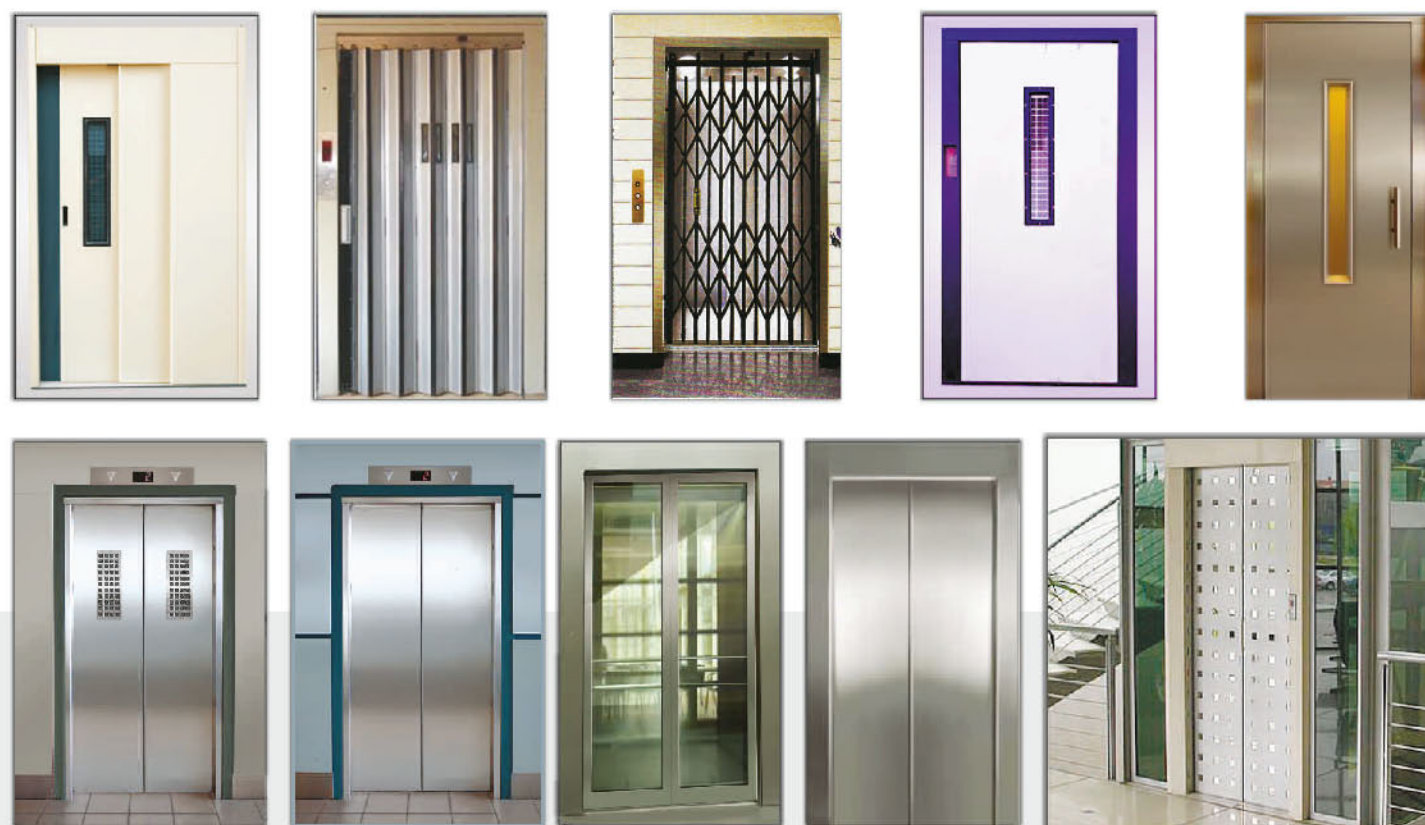
pluralistic design, in perfect harmony with various decoration style

Economical, efficient, green, a total solution to architectural passenger flow

## Range Of Cabin



## Range Of Doors



## Powder Coating Shades





Ozone Elevator Co. manufacture six types of machine, they are  
\*Bottom Traction M/c. \*Single shaft traction M/c. \*Machine Roomless.  
\*Gearless Permanent Magnet \*Over Speed Governor with PMS motor.

Our machines are specially designed for various application such as speed capacity with rigid & Rugged Reliability, smooth trouble free operation. We use standard worm and worm gears with taper roller bearings and thrust bearing in machine for maximum load carrying capacity.

The perfect lubrication system gives longer life and operation.

The machine are mounted on special type of rubbers which have ordinary dumping capacity, due to this characteristic, the machine runs vibration free.



**Gearless Machine**



**Traction Machine**



**Gearless Machine**



**Traction Machine**

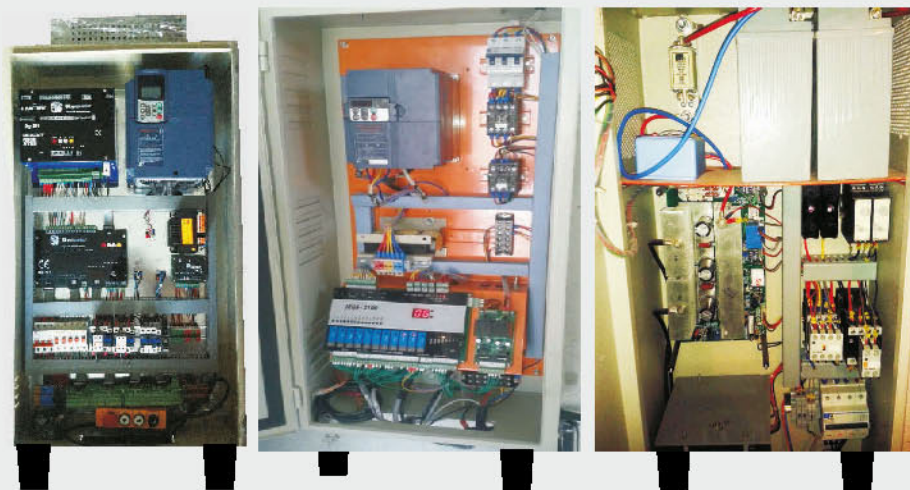


**Traction Machine**



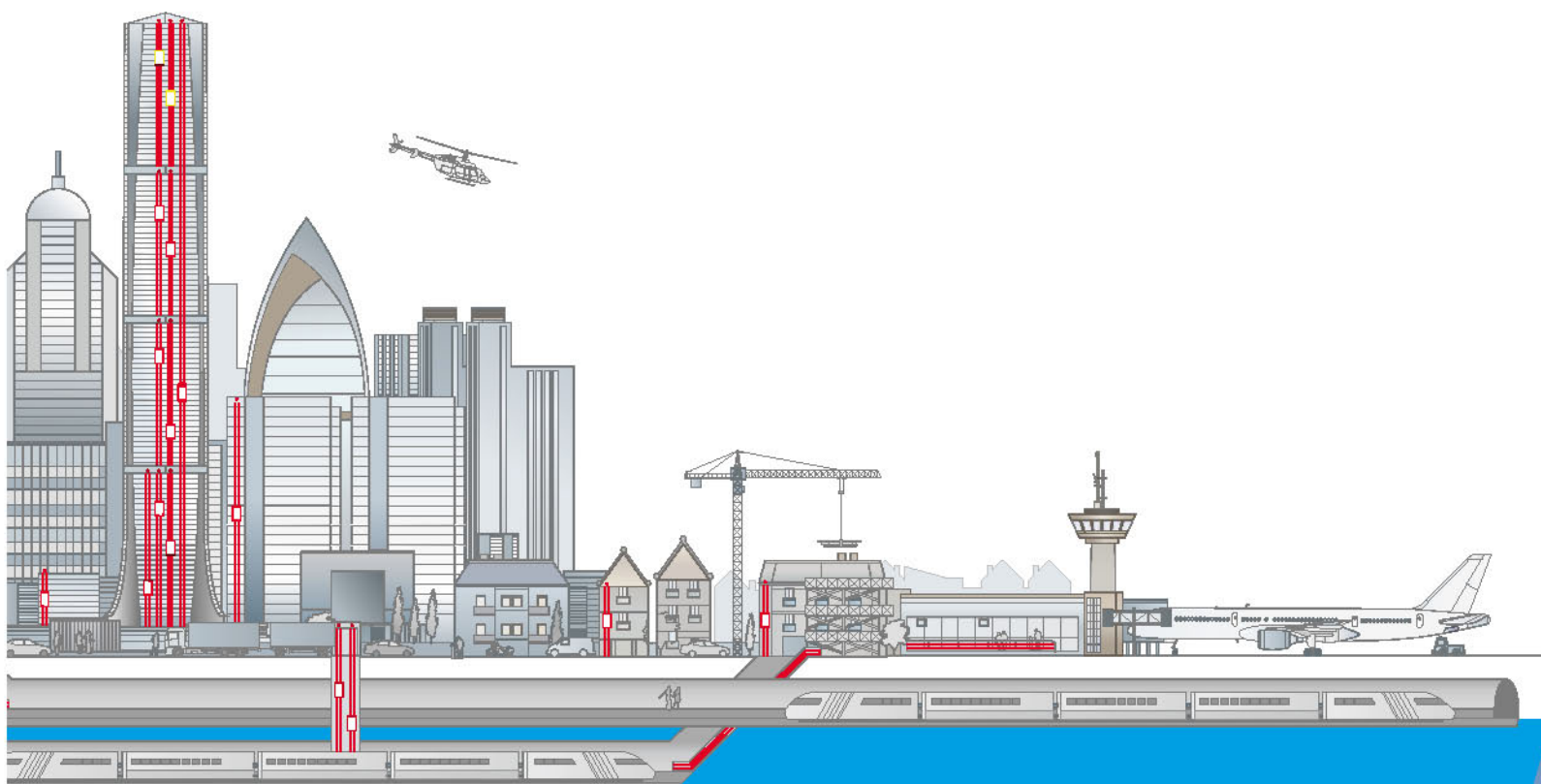
**Gearless Machine**

## Elevator Controller



### Technical Specification

- Battery Voltage 24V, 2 X 12V
- Maximum back up time 4 minutes
- Naturally air cooled
- Duty combination LSVF geared elevators from 0.4 m/s upto 1.0 m/s
- Door Operator - Any power operated doors or manual entrances
- Speed during rescue run - 1/12 (4 Hz) of Nominal Elevator speed
- Maximum distance between floors - 11 meter
- Maximum rescue runs per day - 10
- Rescue operation - Performs rescue operation for total power failure or single phasing.



ISO 9001:2008

**I BELIEVE  
I CAN FLY**

**Head Office Address :**

Row Hosue-S/211, Sector-04, Airoli, Navi Mumbai - 400708.

Tel. : 022-27793343, Mob. : +91-98678 88119 | +91-91678 88119

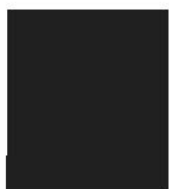
E : [elevatorszone@gmail.com](mailto:elevatorszone@gmail.com) | [info@ozoneelevators.co.in](mailto:info@ozoneelevators.co.in)

W : [www.ozoneelevators.co.in](http://www.ozoneelevators.co.in)

**Other Branches :**

Pune | Aurangabad | Sangli | Ratnagiri | Nashik | Jalgaon  
Satara | Kolhapur





ISO 9001:2008

**I BELIEVE  
I CAN FLY**

